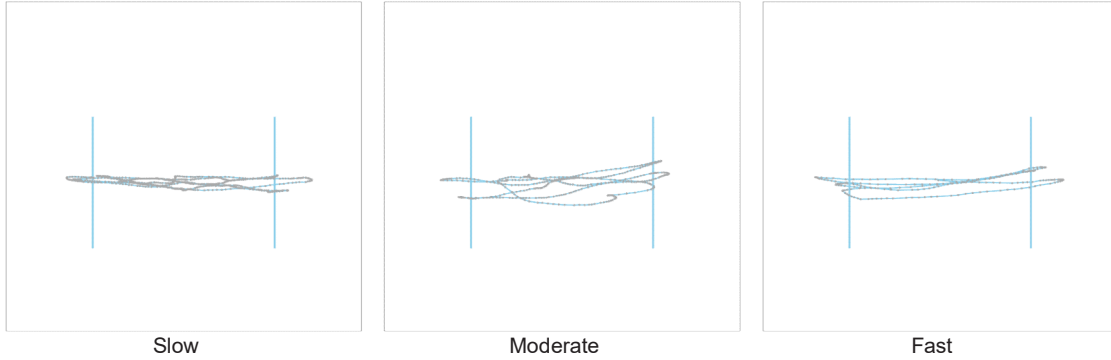


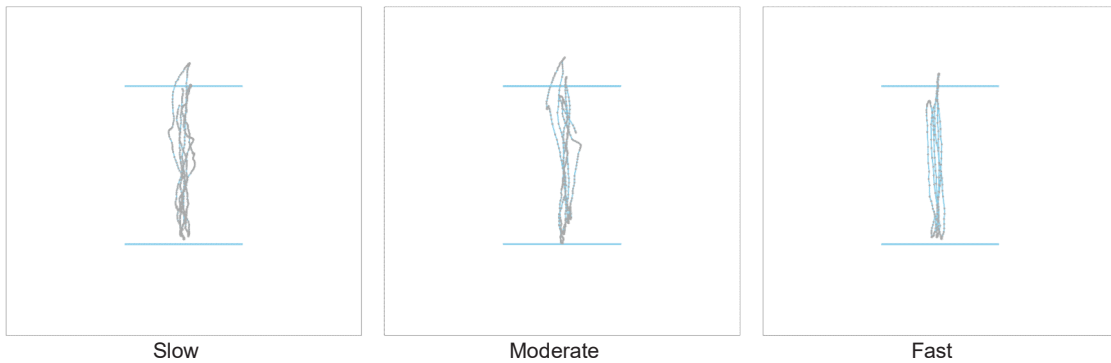
Clinical Report - Rhythmic Weight Shift

Name	John Stuart	Age	59	Device	PhysioSensing
Gender	Male	Date	09/02/2021 13:08:40	Clinic	
Height	1.68 m	ID	T04_10	Health	CT
Weight	72.0 kg			professional	
Diagnosis Protocol	The RWS measures the user's ability to shift the COP rhythmically between two targets at three different speeds.				

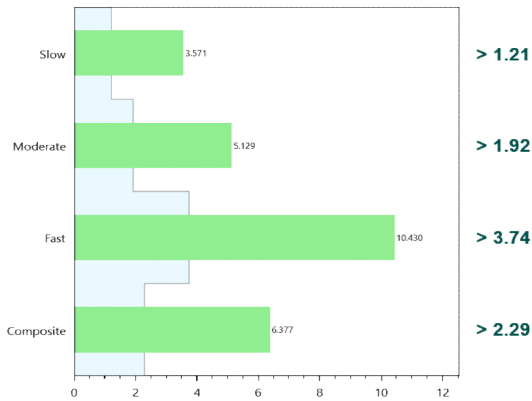
1. Left/Right Weight Shift



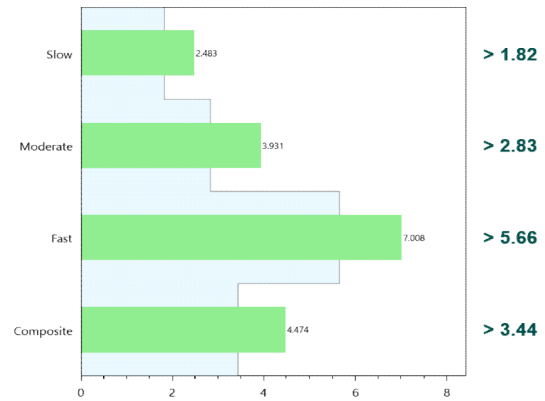
2. Front/Back Weight Shift



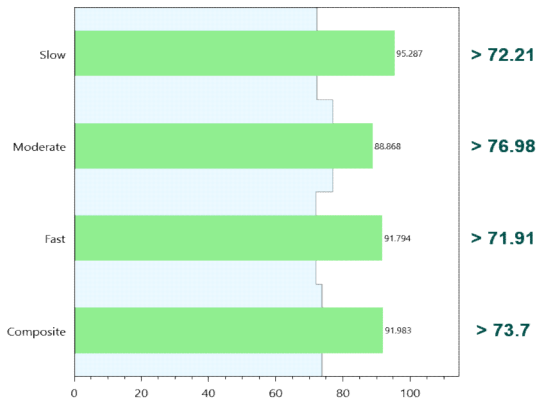
On-Axis Velocity - Left/Right (°/s)



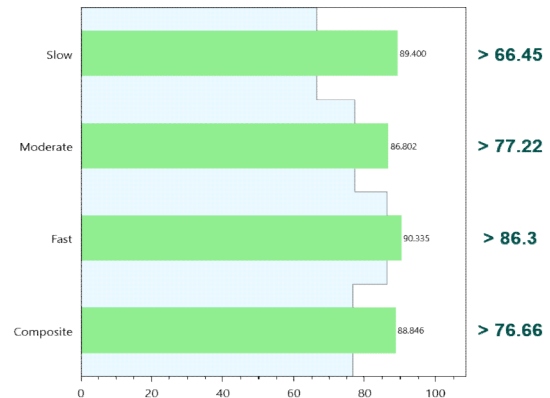
On-Axis Velocity - Front/Back (°/s)



Left/Right Directional Control (%)



Front/Back Directional Control (%)



Clinical Considerations

Healthy individuals are able to maintain an appropriate pace during rhythmic weight shifts with adequate velocity and minimal off-axis displacements.