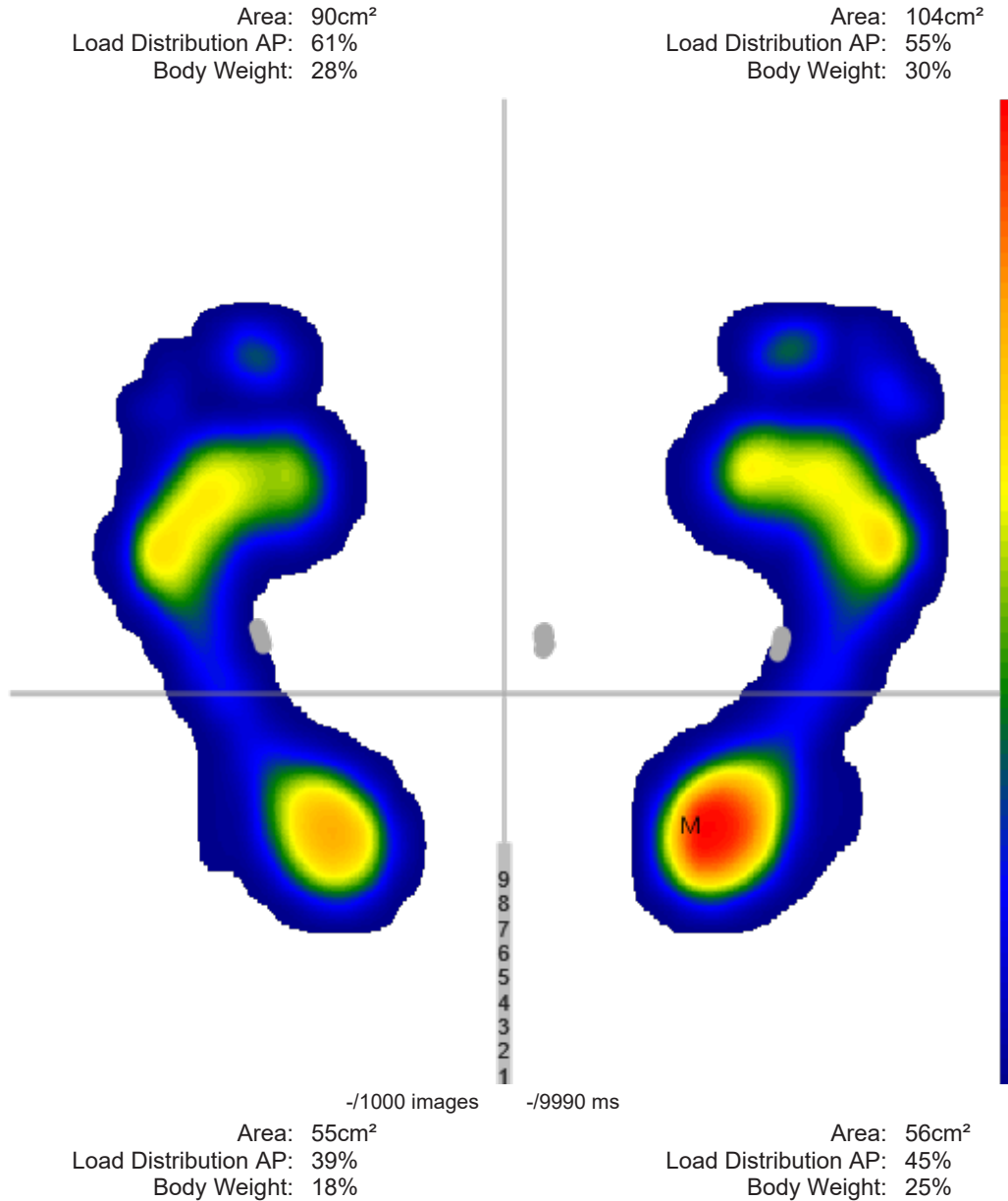


Clinical Report - Postural Analysis

Name	John Stuart	Age	59	Device	PhysioSensing
Gender	Male	Date	28/05/2020 15:26	Clinic	
Height	1.68 m	ID	T04_10	Health	
Weight	72.0 kg			professional	
Exam description					
Diagnosis					



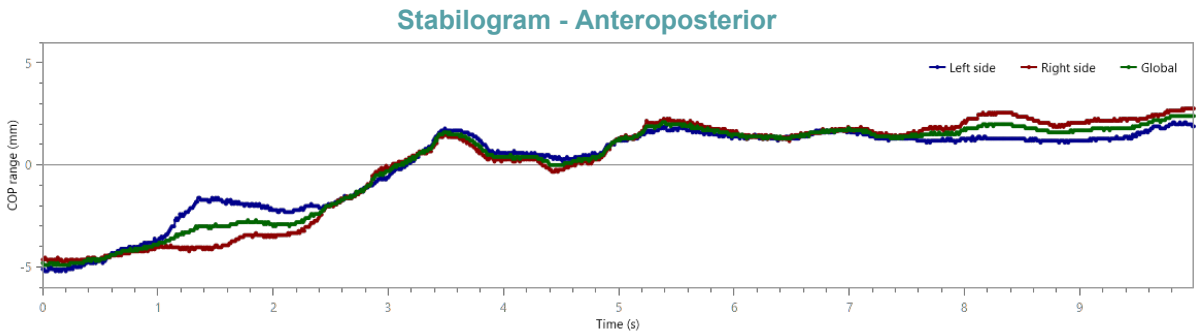
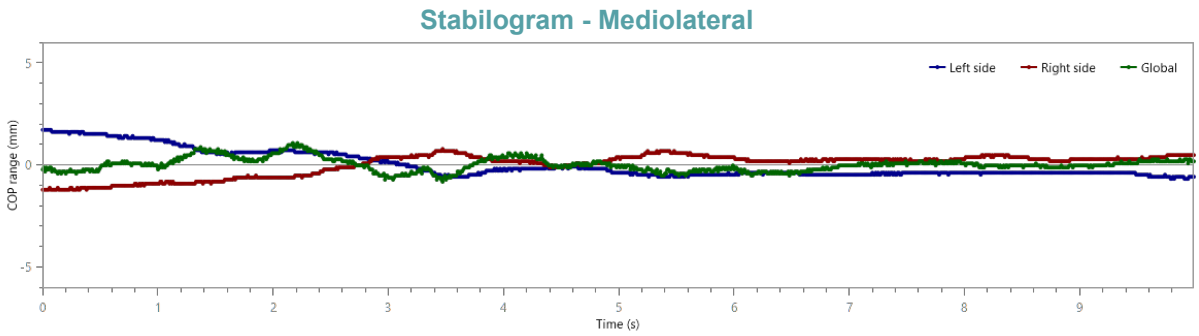
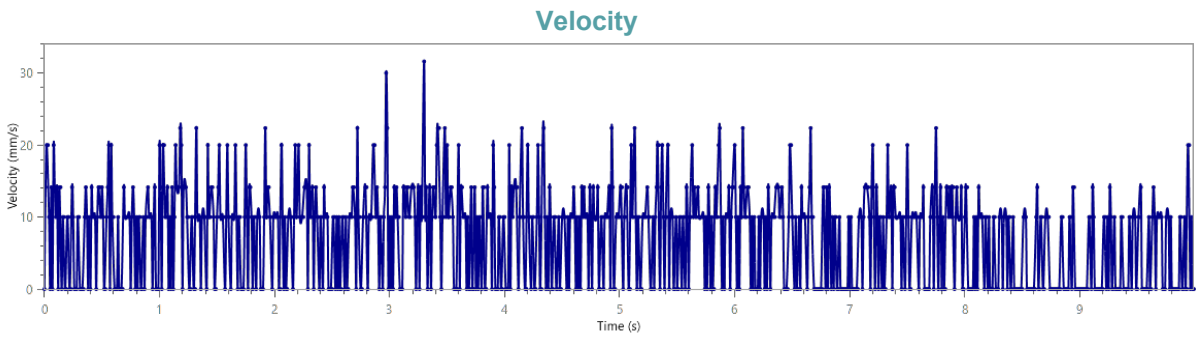
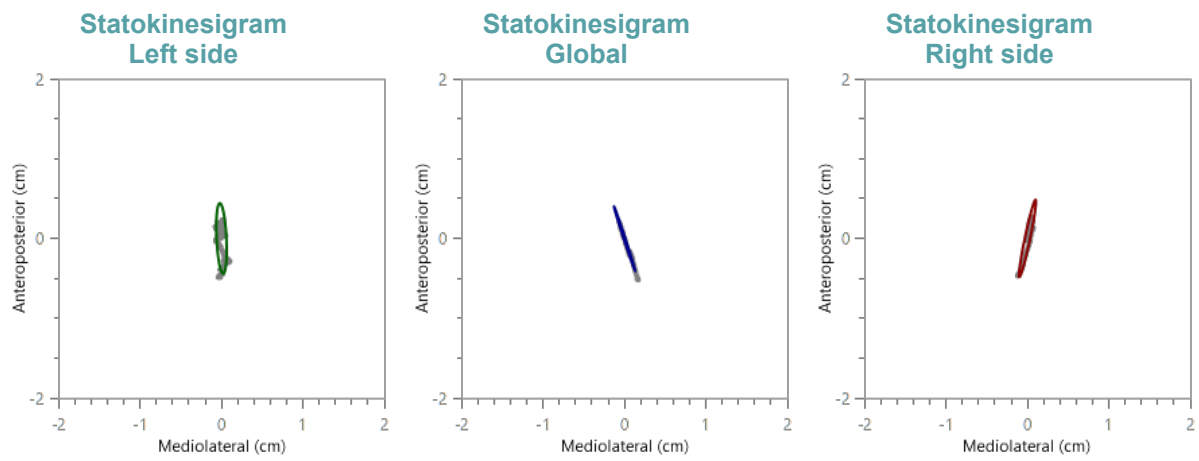
	Area (cm ²)	Max. Pressure (N/cm ²)	Avg. Pressure (N/cm ²)	Body Weight (%)	Weight (kg)	Arch Index (%)
Left	145	5.5	2	45.4	29.5	22% (Normal arch)
Right	160	7	2.2	54.6	35.5	27.5% (Flat arch)
Total	305	7	2.1	-	-	-

Global analysis

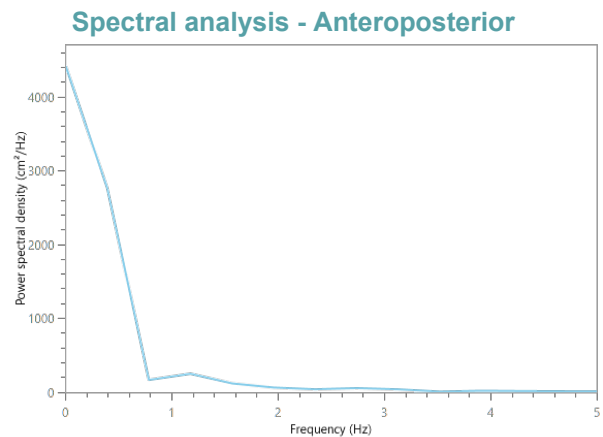
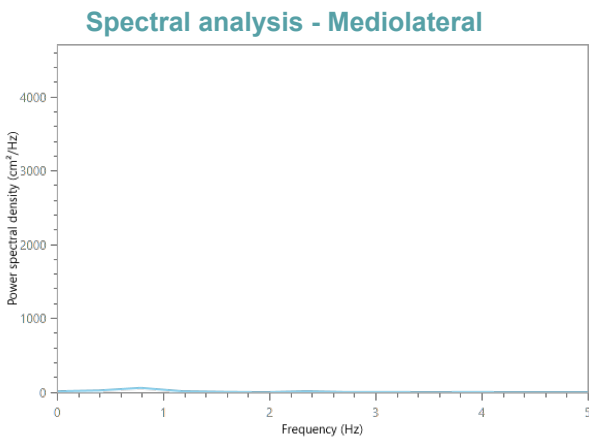
	Results
Ellipse area left (mm ²)	1.29
Ellipse area right (mm ²)	5
Ellipse area (mm ²)	8.35
COP displacement (mm)	75
COP displacement ML (mm)	52.2
COP displacement AP (mm)	32.6
Displacement range ML (mm)	1.9
Displacement range AP (mm)	7.3
Mean COP distance (mm)	299.41
Standard deviation of COP (mm)	1.69
Mean COPml distance (mm)	210.73
Mean COPap distance (mm)	212.69
Standard deviation of COPml (mm)	0.32
Standard deviation of COPap (mm)	2.25
ML root mean square (mm)	210.73
AP root mean square (mm)	212.7
COPml range (mm)	0.3
COPap range (mm)	0.2
Mean velocity (mm/s)	7.51
Standard deviation of velocity (mm/s)	6.46
Mean ML Velocity (mm/s)	5.23
Mean AP Velocity (mm/s)	3.26
Displacement/Ellipse area (1/mm)	8.98
Time (s)	10

Spectral analysis

	Mediolateral	Anteroposterior
Peak frequency (Hz)	1.17	0.39
Mean frequency (Hz)	2.14	0.39
Median frequency (Hz)	1.17	0.39
Frequency at 70.7% (Hz)	1.17	0.78
Frequency at 80% (Hz)	1.96	0.78
Frequency at 85% (Hz)	2.35	0.78
Frequency at 90% (Hz)	2.74	1.56
Frequency at 95% (Hz)	3.91	2.74
Frequency at 99% (Hz)	55.13	11.34



■ Global ■ Left side ■ Right side



frequency acquisition: 100Hz